

By the Numbers

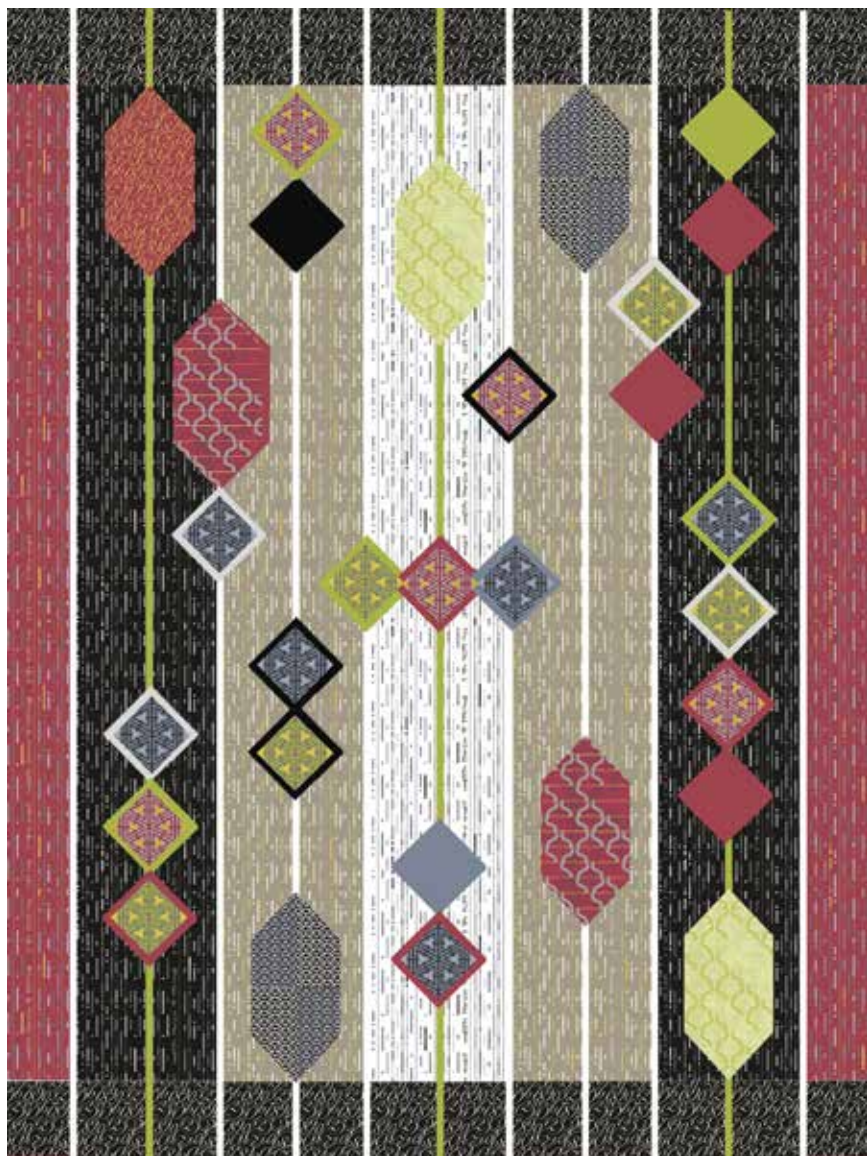
BY LONNI ROSSI



Abacus Quilt by: **Lonni Rossi**

Quilt Size: **44³/₈" x 60"**

andoverfabrics.com



About By the Numbers

This little fabric group is an homage to numbers... beautiful scripty ones in metallic gold and silver, mad crazy formulas and abacus images. Put two and two together for more fabric, more fun and uniquely modern designs from Lonni Rossi and Andover Fabrics.

andover



makower uk
The Henley Studio

Free Pattern Download Available

1384 Broadway New York, NY 10018
Tel. (800) 223-5678 • andoverfabrics.com

Abacus Quilt



Introducing Andover Fabrics new collection: **BY THE NUMBERS** by Lonni Rossi

Quilt designed by Lonni Rossi

Quilt finishes 44 $\frac{3}{8}$ " x 60"

Time will fly as you stitch this quick and easy strippy quilt that places the focus on the novelty prints. Arrange the raw-edge appliqué patches along the skinny strips as you wish to make this quilt your very own creation.

Cutting Directions

Note: Read assembly directions before cutting patches. All measurements are cut sizes and include $\frac{1}{4}$ " seam allowances. A fat $\frac{1}{8}$ is a 9" x 20"-22" cut of fabric. Strips are the exact lengths required plus $\frac{1}{4}$ " seam allowances. WOF designates the width of fabric from selvedge to selvedge (approximately 42" wide).

Fabric A

Cut (20) rectangles 4" x 4 $\frac{1}{2}$ "
Cut (4) rectangles 3 $\frac{1}{8}$ " x 4 $\frac{1}{2}$ "

Fabric B

Cut (4) background strips 4" x 52 $\frac{1}{2}$ ", cut lengthwise

Fabric C

Cut (4) background strips 4" x 52 $\frac{1}{2}$ ", cut lengthwise

Fabric D

Cut (2) background strips 4" x 52 $\frac{1}{2}$ ", cut lengthwise

Fabric E

Cut (2) background strips 3 $\frac{1}{8}$ " x 52 $\frac{1}{2}$ ", cut lengthwise

Fabric F

Cut (3) sashing strips $\frac{7}{8}$ " x 60 $\frac{1}{2}$ ", cut crosswise
Cut squares 4" x 4" as desired (read Step 4)

Fabric Requirements

	Yardage	Fabric
*Fabric A border	$\frac{1}{2}$ yard	7855-MK
Fabric B background	1 $\frac{1}{2}$ yards	7859-MG
Fabric C background	1 $\frac{1}{2}$ yards	7859-MK
Fabric D background	1 $\frac{1}{2}$ yards	7859-MKL
Fabric E background	1 $\frac{1}{2}$ yards	7859-MR
Fabric F sashes	$\frac{3}{8}$ yard	A-T-Bamboo
Fabric G sashes	$\frac{1}{2}$ yard	A-T-White Lies
10 Fat $\frac{1}{8}$'s appliqué	Fat $\frac{1}{8}$ yard ea.	
7855-MR	7856-MK	7857-MG 7857-MR
7858-MG	7858-MK	7858-MR
A-T-Magnum	A-T-Sidewalk	A-T-Zinfandel
Binding	$\frac{3}{4}$ yards	7857-MKC (suggested)
Backing	3 yards	7857-MKC (suggested)

Fabric G

Cut (8) sashing strips $\frac{7}{8}$ " x 60 $\frac{1}{2}$ ", cut crosswise
Cut squares 4" x 4" as desired

10 Fat $\frac{1}{8}$'s

Cut (7) rectangles 5" x 10" (total)
Cut (16) squares 3" x 3" (total)
Cut (22) squares 4" x 4" (total)

Binding

For *invisible* binding:

Cut (2) strips 3 $\frac{1}{2}$ " x width of quilt raw edge to raw edge, cut crosswise and pieced

Cut (2) strips 3 $\frac{1}{2}$ " x length of quilt raw edge to raw edge, cut crosswise

OR for *traditional* binding:

Cut (6) strips 2 $\frac{1}{2}$ " x WOF

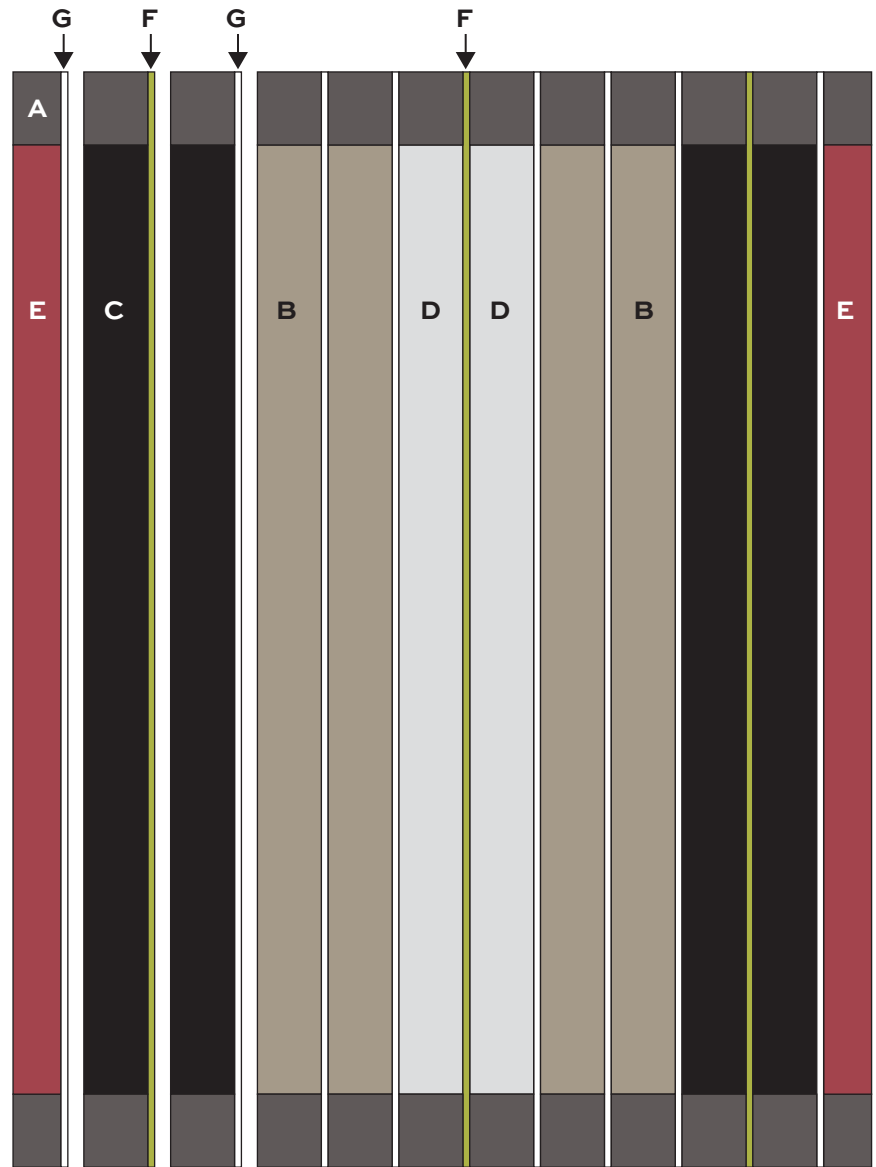
Backing

Cut (2) panels 34" x 52", pieced to fit quilt top with overlap on all sides

Abacus Quilt

Making the Quilt

1. Referring to the Quilt Diagram, sew Fabric A 4" x 4½" patches to ends of each 4" x 52½" strip. Sew Fabric A 3⅛" x 4½" patches to ends of the Fabric E 3⅛" x 52½" strips.
2. Using a walking foot or even-feed on your machine, sew Fabric F and G sashing strips between the long pieced strips in the order shown to make the background. Press seam allowances away from the sashing strips. Trim ends if necessary to square the top and bottom.
3. Following manufacturer's instructions, draw the 5" x 10" rectangles on fusible webbing. Cut rectangles out beyond the drawn lines. Mark dots 2½" from the corners along all sides (Diagram 1). Press rectangles to the wrong side of the fabrics, choosing fabrics as shown or as you wish. Cut rectangles on the drawn lines, trimming corners as shown.
4. Draw the 3" and 4" squares on fusible webbing. Press to the wrong side of the fabrics, choosing fabrics as shown or as you wish. Cut a total of 22 squares 4" x 4" and a total of 16 squares 3" x 3" from all fabrics. Cut squares out along the lines.
5. Use the Quilt Photograph to help position the squares and trimmed rectangles on the background. Fuse each patch to the quilt, following manufacturer's instructions. Note that the 3" squares are centered on 16 of the 4" squares. Finish the raw edges with a decorative machine stitch using contrasting thread, or use an invisible thread with a blind appliqué machine stitch. Lonni suggests that you use satin stitch embroidery on the edges of some of the appliqué shapes.



Quilt Diagram

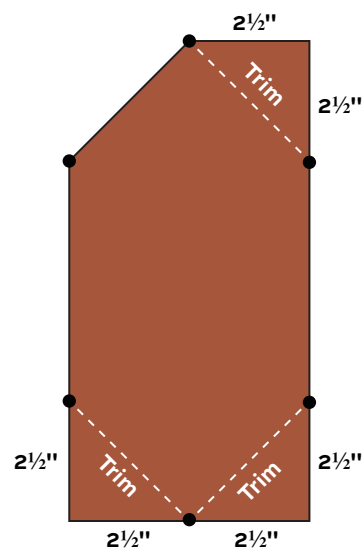


Diagram 1 - Make 7

Finishing the Quilt

6. Layer the quilt with batting and backing and baste. Quilt in the ditch around the squares. Quilt vertical lines spaced ½" apart in the background.
7. Follow the directions for Lonni's invisible binding using the 3½"-wide strips, or finish the quilt with traditional binding.

Abacus Quilt

Invisible Binding

These directions are for binding that doesn't show on the front of the quilt. Strips of fabric are stitched around the quilt to make a facing with mitered corners. The entire facing is turned to the back of the quilt. These directions work for any quilt when you want the design to be uninterrupted all the way to the edge of the quilt.

Step 1

When you have finished quilting, trim the edges of the quilt so all sides are straight and the corners are square.

Step 2

Measure through the center of your quilt from the top raw edge to the bottom raw edge. Note this measurement. It will be the length of your side strips. Similarly, measure from side to side across the center of the quilt. This will be the length of your top and bottom strips. Cut the number of 3½"-wide strips needed to construct the facing strips. Piece them with diagonal seams as necessary to make 2 side strips and 2 top/bottom strips the exact length needed for your quilt.

Step 3

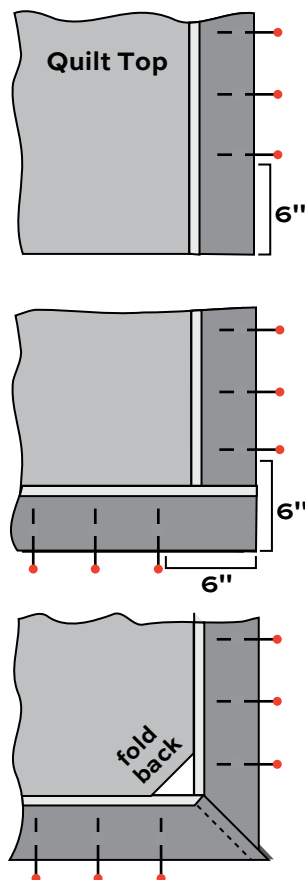
Press ½" to the wrong side on one long edge of each strip.

Step 4

Lay quilt face up on a table. Right sides together, align the unpressed edge of one strip with the corresponding edge of the quilt top, matching centers. Starting at the center, pin the binding to the quilt to within 6 inches of each corner. Continue in this manner until you have pinned the binding strips to all four edges of the quilt top.

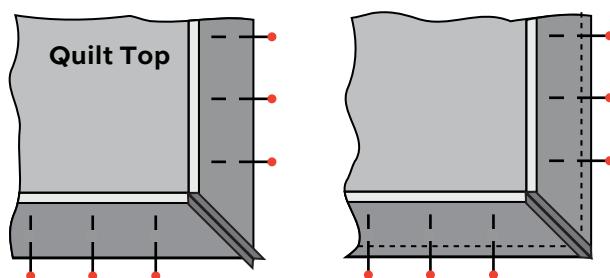
Step 5

Using a 45° triangle ruler, mark the sewing line for the miter at the end of each strip, remembering to add the seam allowance. With right sides together, pin corners and sew the miters without removing the pinned binding from the quilt. Trim off the excess fabric, leaving a ¼" seam allowance.



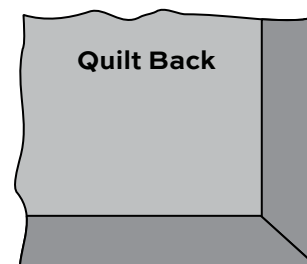
Step 6

Finger press the seam allowances open and finish pinning the corners to the quilt. Using a walking foot, sew the binding to the quilt using a ⅜" seam all the way around all four sides. Trim the seam allowances at the corners.



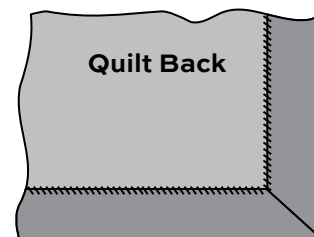
Step 7

Turn the binding to the back of the quilt, making sure the corners are fully turned to a nice crisp point.



Step 8

Steam press so the edge is straight and the quilt lies flat. Whip stitch the folded edge to back of quilt by hand, being careful not to let any stitches show through to the front of the quilt.



By the Numbers

BY LONNI ROSSI



7855-MG



7855-MK*



7855-MR*

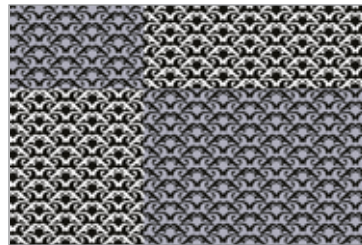
Blend with
Textured Solids fabrics
by Andover



A-T-Bamboo*



7856-MG



7856-MK*



7856-MR



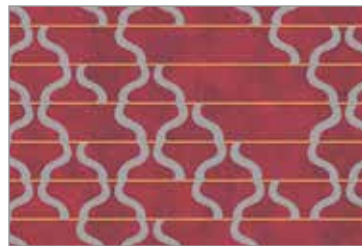
A-T-White Lies*



7857-MG*



7857-MKC*



7857-MR*



A-T-Zinfandel*



A-T-Sidewalk*



7858-MG*



7858-MK*



7858-MKC



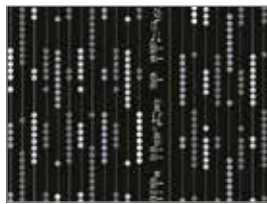
7858-MR*



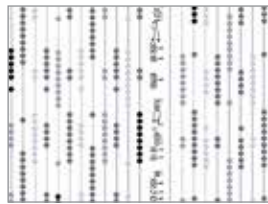
A-T-Magnum*



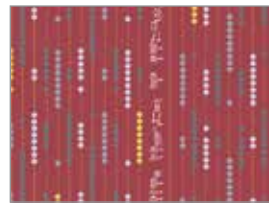
7859-MG*



7859-MK*



7859-MKL*



7859-MR*

*Indicates fabrics used in quilt pattern. Fabrics shown are 25% of actual size.

andover

•
•
•
•
•
makower uk
Te eney su o

Free Pattern Download Available

1384 Broadway New York, NY 10018
Tel. (800) 223-5678 • andoverfabrics.com